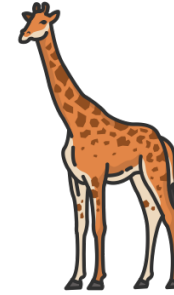
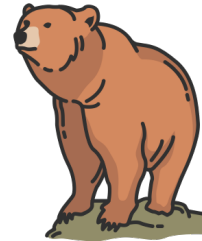
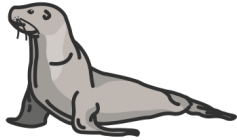


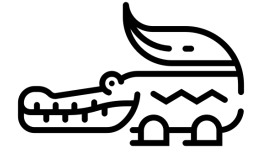
Zoo - Suchsel II

Finde die 10 Tiere im Suchsel und übermale sie farbig.

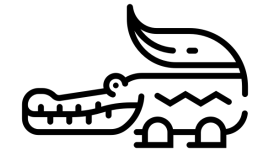


W	K	E	P	Z	G	O	R	I	L	L	A	D	W
V	U	T	T	H	E	F	Y	E	X	T	Y	K	T
P	Y	W	I	U	P	P	A	N	D	A	O	P	Z
F	G	R	G	J	Z	C	P	Z	F	V	E	E	R
A	I	X	E	S	E	E	L	Ö	W	E	F	L	O
U	R	U	R	T	J	W	T	E	D	L	U	I	W
R	A	H	Z	E	U	Y	U	P	W	C	Z	K	D
O	F	L	A	M	I	N	G	O	Z	H	P	A	O
H	F	Q	T	O	R	Z	O	J	R	J	O	N	R
T	E	W	U	B	R	A	U	N	B	Ä	R	W	J

Hier kannst du die Tiernamen aufschreiben.



A series of ten horizontal lines for writing, each consisting of a thin top line, a thick middle line, and a thin bottom line.



Lösung:

					G	O	R	I	L	L	A		
			T										
P			I			P	A	N	D	A		P	
F	G		G									E	
A	I		E	S	E	E	L	Ö	W	E		L	
U	R		R							L		I	
	A									C		K	
	F	L	A	M	I	N	G	O		H		A	
	F											N	
	E			B	R	A	U	N	B	Ä	R		